

Products to fit any of your needs



Ideas to enhance your performance

NEM, founded in 1995, is a valve manufacturer specialising in the development of hydraulic solutions for mobile, agricultural and industrial applications.

Our goal is to be a reliable partner, providing for our customers a state of the art service, delivered by highly qualified technical staff, to achieve customized solutions.

At NEM we are aware that the future of the hydraulic industry is in system engineering. We are therefore developing and manufacturing top quality products, which can be fully integrated into many

different applications. NEM components ensure the highest level of performance and safety in any application; this, together with our focus on innovation, has gained us the trust and appreciation of leading machine manufacturers worldwide.

NEM's product range can count on a wide range of options, from cartridge valves and hydraulic integrated circuits to Parts-In-Body counterbalance valves and flow control valves.

All our products can be selected from our catalogues or customised by NEM's

application engineers to develop a selection of valves specifically designed for different applications in order to respond to any of our customer needs.

Last but not least, NEM can also provide its own range of compact directional control valves, rated for metered flows up to 40 L/min.

All these products, together with our innovative solutions for load and flow sensing control valves demonstrate our attitude towards engineering fluid power solutions.

Mechanical and Electrical Cartridge Valves

Pressure control valves	p_{max}	350 bar
Counterbalance valves	Q_{max}	200 L/min
Directional control valves	Cavity	up to SAE 16
Flow control valves		M27x1,5



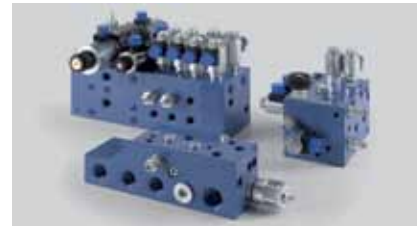
Parts-in-Body Valves

Counter balance valves	p_{max}	410 bar
PO check valves	Q_{max}	500 L/min
Boom lowering control valves	Ports	up to 1 1/4 SAE6000
Pressure control valves		
Flow control valves		



Hydraulic Integrated Circuits

Weight lifting	p_{max}	350 bar
Earth moving	Q_{max}	200 L/min
Agricultural vehicles		
Industrial vehicles		



Directional Control Valves

Flow sensing	p_{max}	350 bar
Load sensing	Q_{max}	40 L/min
	Ports	BSP 3/8"



Solutions from NEM for Compact Directional Control Valves



Compact Directional Control Valves

Flow sensing valves type NVD2



NVD2 is a highly innovative directional control valve, which leads the way in the world of proportional valves. NVD2 technology (patented) impressively links constructive simplicity and high functional performance; a simple and compact design, typical of the more traditional open-centre directional valves. It is associated with an extremely precise control, independently from the load conditions and simultaneous movements. The flow sensing principle is efficient when electrically operated. It reaches its maximum potential when used in combination with radio remote control or electronic control devices.

The flow sensing principle is based on the equilibrium between the oil flow and the electro-proportional actuation forces, so this direct feedback makes the flow control independent of the simultaneous loads.

Type	Q_{max} (L/min)	p_{max} (bar)	Ports
NVD2	50	350	BSP 3/8"

- Features:
- Load independent flow control
 - Proportional electro-hydraulic actuation
 - Open centre (Closed centre available on request)
 - Up to 8 work sections, with or without anti-shock valves, with or without manual override
 - Maximum regulated flow 40 L/min (ports A/B)
 - Inlet section with pressure reducing valve

Load sensing valves type NVS3



NVS3-LS is a compact load sensing, electro-proportional actuated, directional control valve; designed to control a maximum inlet flow of 30 L/min. Its architecture is based on the combination of SAE 10 DCV cartridges screwed into aluminium bodies.

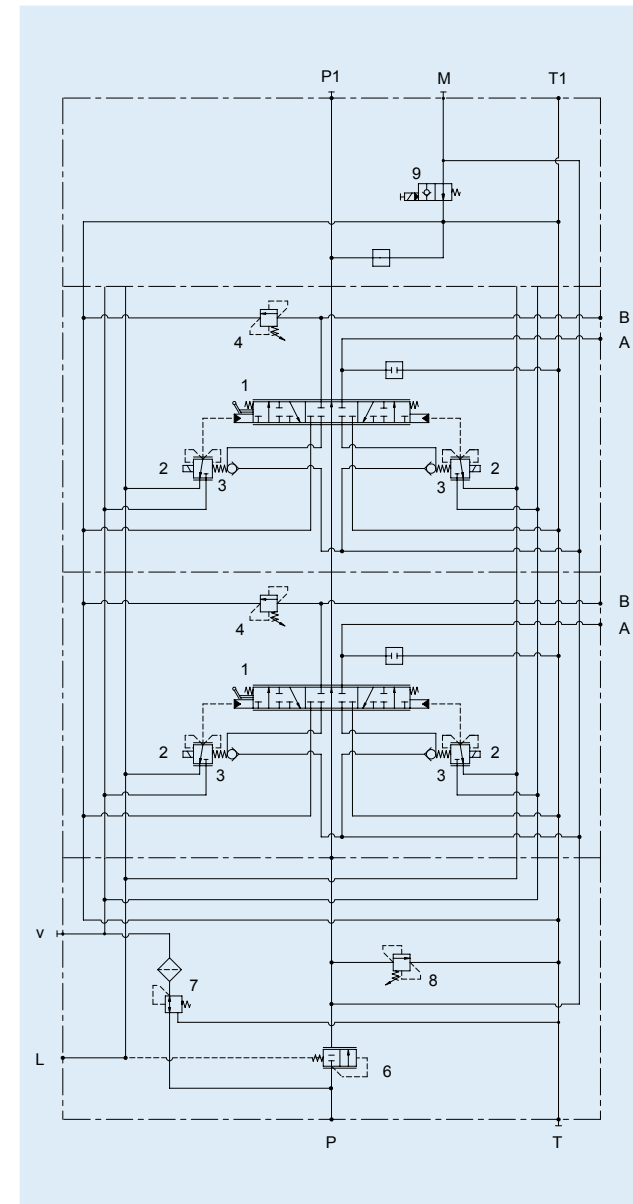
NVS3-LS is designed for basic applications where the flow control is not required under simultaneous movement. Typical applications for NVS3 valves are self propelled access platforms or small cranes.

The most interesting features are: the light weight, obtained as a result of the aluminium body and the easy possibility to integrate inside the inlet element any type of valves in order to obtain a customized hydraulic integrated circuit.

Type	Q_{max} (L/min)	p_{max} (bar)	Ports
NVS3	30	210	BSP 3/8"

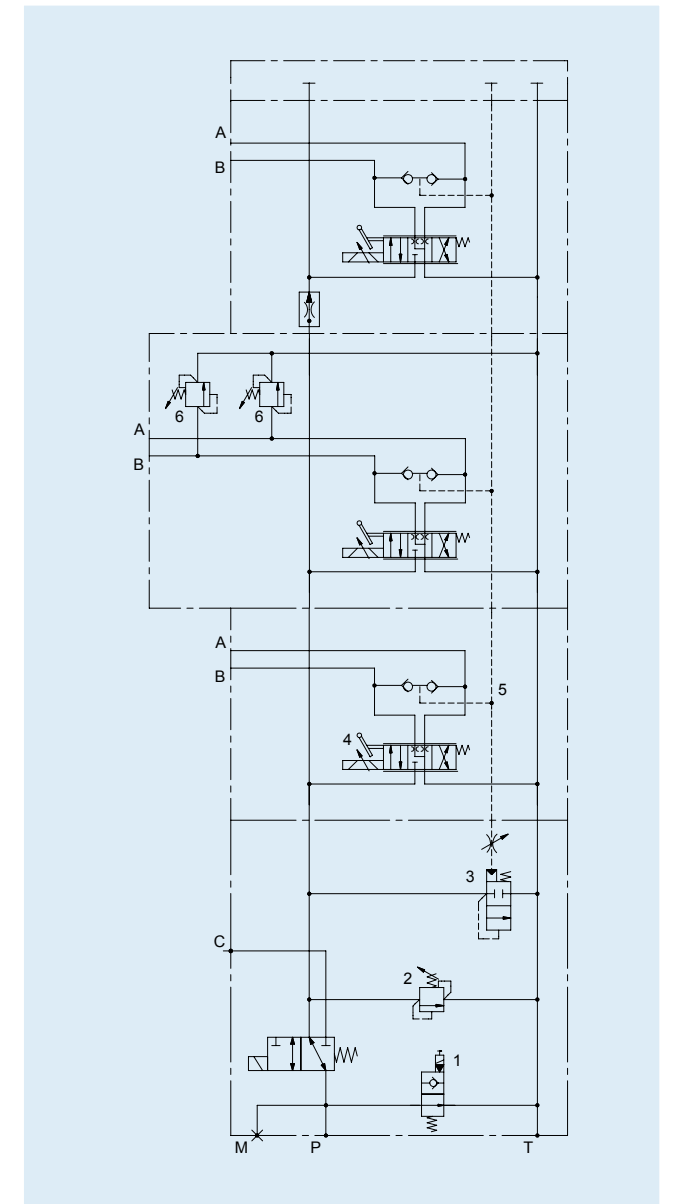
- Features:
- Modular design
 - Up to 8 work sections, with or without anti-shock valves, with or without manual override
 - Maximum regulated flow 24 L/min (ports A/B)
- Options:
- Sections with integrated flow limitation (e.g. slew)
 - Inlet section with priority flow cartridge
 - On-off versions

Flow sensing valves type NVD2



- 1 Spool activated by proportional electro-hydraulic control
- 2 Electro-hydraulic proportional control
- 3 Flow control poppet
- 4 Anti-shock valve
- 5 Plug for antishock valve replacement
- 6 Pre-loading valve
- 7 Pressure reducing valve
- 8 General relief valve
- 9 Electric dump valve

Load sensing valves type NVS3



- 1 Electric dump valve
- 2 General relief valve
- 3 Hydraulic compensator
- 4 SAE10 4 way 3 pos directional cartridge valve
- 5 Load sensing circuit
- 6 Anti-shock valve

Note: the pictures show some example of customized solutions; see our DCV catalogue (DT004GB000) for standard configurations.